



SMART CITY SOLUTION

2023 Product Catalogue



BRILLIANT GUARD



Smart Connected Technology

Powered by Brilliant Guard



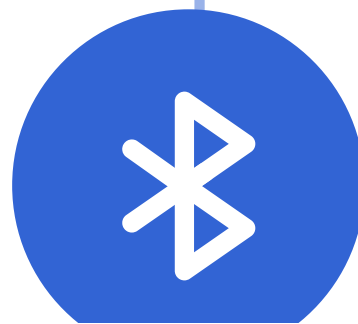
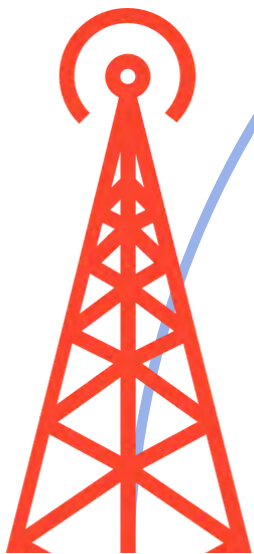
SMART. TRANSFORMATIVE. CONNECT

Smart connected technology is providing fundamental interconnection technique to create smart cities, smart warehouses, and smart factories to improve efficiency and reduce management cost. Business owners can rely on our smart locks that can be opened by mobile App or smart key. Sharing access control with hundred employees can be just a click away, plus our LTE-enabled solution can deliver lock status, user information and alert to centralized private server in real-time; therefore, owners now know exactly who and where opens the lock. Our additional peripheral IoT devices like temperature/humidity/waterleak sensors and an emergency button are integrated and streamlining all machine data together that build a solid and true full Industrial IoT Hub.

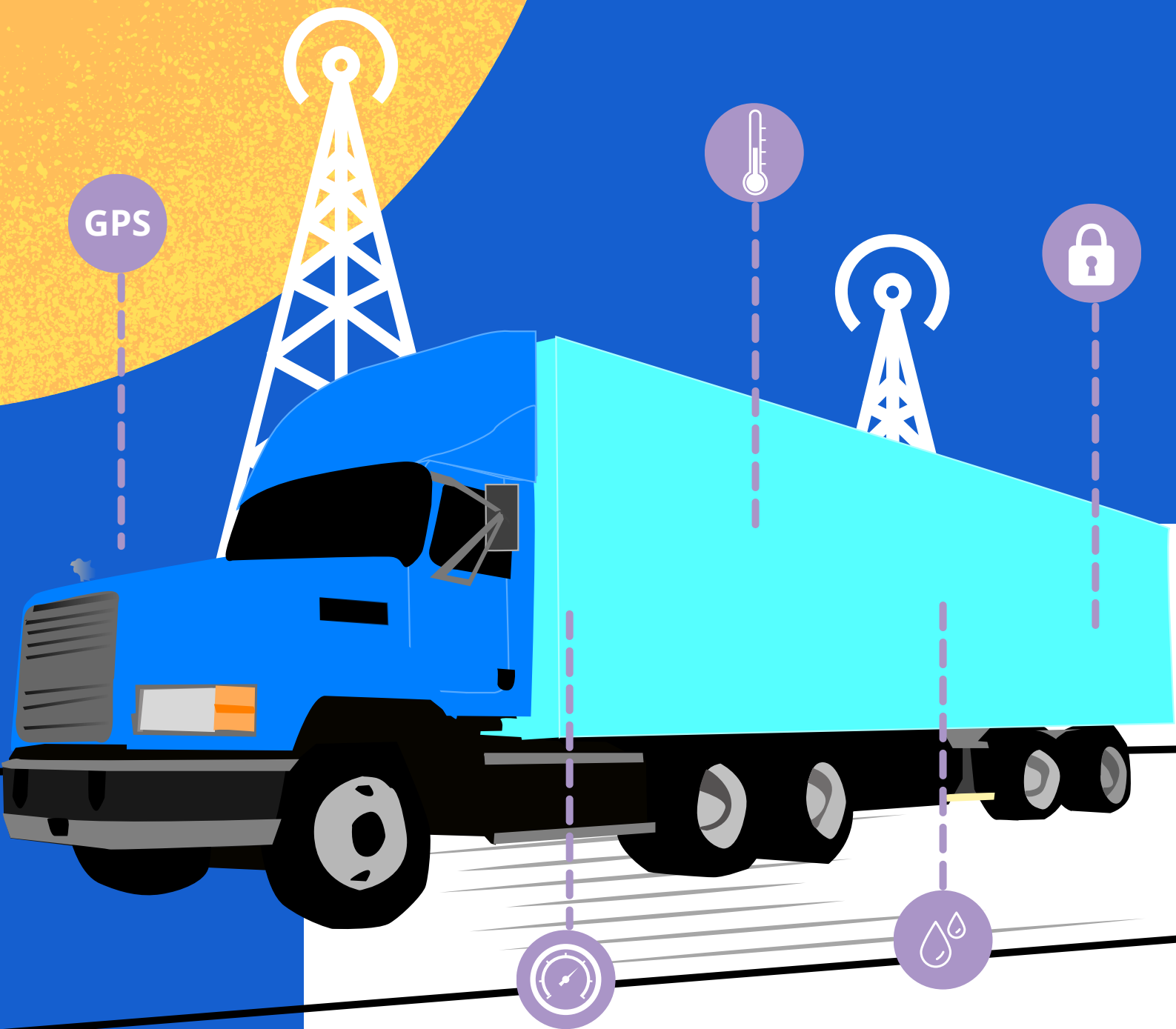




Smart connected technology is providing fundamental interconnection technique to create smart cities, smart warehouses, and smart factories to improve efficiency and reduce management cost. Business owners can rely on our smart locks that can be opened by mobile App or smart key. Sharing access control with hundred employees can be just a click away, plus our LTE-enabled solution can deliver lock status, user information and alert to centralized private server in real-time; therefore, owners now know exactly who and where opens the lock. Our additional peripheral IoT devices like temperature/humidity/waterleak sensors and an emergency button are integrated and streamlining all machine data together that build a solid and true full Industrial IoT Hub.



Mobility Solution



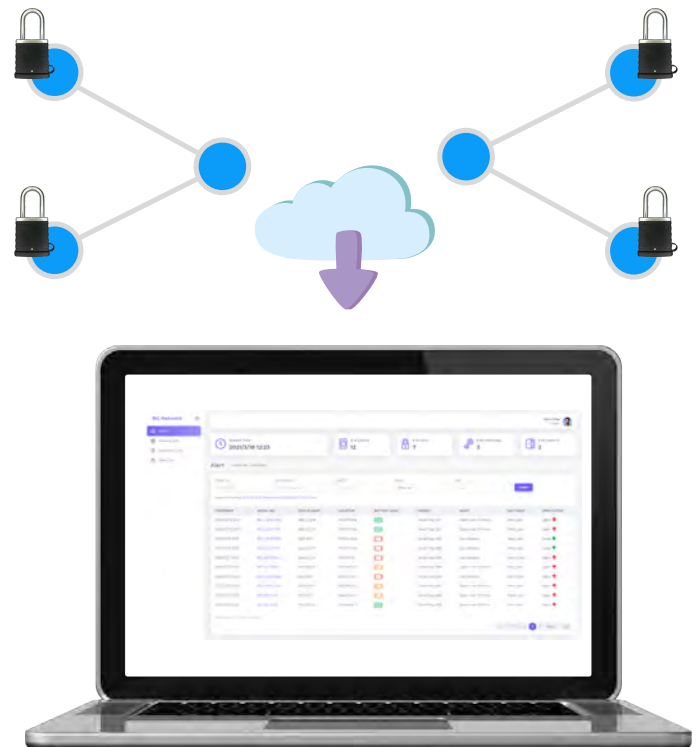
ALWAYS CONNECTED
supported by 4G LTE network

Brilliant Guard WL1289 is a Bluetooth Low Energy (BLE) to Wi-Fi connectivity gateway. This cost-effective, low energy consumption, Wi-Fi enabled with TLS security standard gateway bridging with our BG private server via MQTTS protocol can seamlessly deliver user and device management data from BG locking products anytime, anywhere. This gateway provides hassle-free real time monitoring solution in business private network that can fully protect company and user privacy.

Secured by Brilliant Guard

BG Connect Hub

BG Connect Solutions is a exclusively designed and developed for SME and small business which is interested to monitor access control and manage their privacy of business premise over cloud server. This real-time monitoring, event data storage and management control can provide cost-effective and easy-to-deploy solution to business offices, warehouses and commercial building to increase access security and provide industrial IOT solutions in no-time..





Software Development Kit (SDK)

Want to intergrate the solution with us and using our smart lock? We provide a set of software tools and program tools used by developers to create your application for Android and iOS mobility platform that could help you reduce the development cycles and make the faster deployment time.

The SDK tools will include the libraries, documentation, code samples and guiels that developer can use nd integrate into their own apps, thus you would need an Android SDK toolkit to build an Android app, an iOS SDK to build an iOS app.



2023 Product Catalogue

Smart Locks

Smart Key

Sensors & Gateway



Smart Locks



Duels Keys Access Padlock

BGPL1330

Brilliant Guard BGPL13330 features dual key access for providing people with both traditional and modern lock open experience, and we transform it to be smarter and eco-friendly by developing three different access methods. This solid lock is fit for outdoor and indoor that especially design for warehouse / facility / construction site management with tracking access records.



Technical specifications

- Material : Zinc Alloy/Boron Alloy Shackle
- Operating Temperature : -10°C to +60°C
- Operating Humidity : From 45 to 75%
- Battery Capacity : Lithium Rechargeable 500mAh
- Dimension & weight : 3.5 x 2.5 x 1.15 inches in 600g
- IP rating : IP65
- Wireless Technology : Bluetooth Low Energy 5.0 compatible
- Wireless Coverage : 30 feet (Line of Sight)
- Display : LED Color Code (Blue, Green, Neon Orange)
- Power Port : Micro-USB connector (Type C)
- Companion App : Android 6.0 or later, iOS 10.0 or later
- Log Storage : up to 256 event records
- Key Storage : up to 100 keys
- Lock Access : Physical Key, Mobile App and Smart Key (Programmable)

Shackle Protected Padlock

BGPL1333SP

Brilliant Guard BGPL1333SP is developed for Marine Freight Carrier and high theft risk area that additional shackle protection is needed. Zinc Alloy shackle protector can easily reduce 50% of intruder opportunity to open the shackle. It is fully compliance with Industrial IP standard up to IP66. Lower part of lock body is protected by heavy-duty plastic to improve accessibility and increase robustness. Sharing lock to group of friends or colleague can be just few-clicks away. Companion mobile app can be found from Android or iOS app.



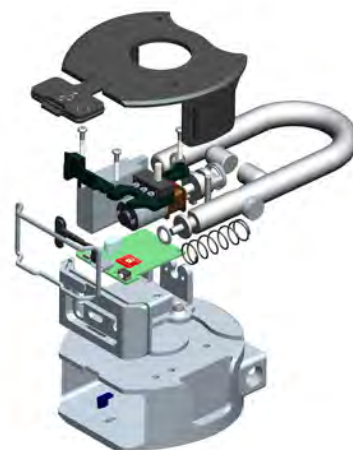
Technical specifications

- | | |
|-------------------------|---|
| • Material | : Zinc Alloy/Boron Alloy Shackle |
| • Operating Temperature | : -10 °C to +60 °C |
| • Operating Humidity | : From 45 to 75% |
| • Battery Capacity | : Lithium Rechargeable 500mAh |
| • Dimension & weight | : 2.5 x 2.5 x 1.2 inches in 480g |
| • IP rating | : IP66 |
| • Wireless Technology | : Bluetooth Low Energy 5.0 compatible |
| • Wireless Coverage | : 30 feet (Line of Sight) |
| • Display | : LED Color Code (Blue, Green, Neon Orange) |
| • Power Port | : Micro-USB connector (Type B) |
| • Companion App | : Android 6.0 or later, iOS 10.0 or later |
| • Log Storage | : up to 256 event records |
| • Key Storage | : up to 100 keys |
| • Lock Access | : Mobile APP and Smart Key (Programmable) |

Smart High Precious Padlock

BGPL1338

Brilliant Guard PL1338 is designed to transform conventional keyed padlock to Key-less, the smartphone managed and patented smart key features but retaining industrial heavy-duty protection and easy to use design. From design to manufacturing is all under one experienced engineering team. Features such as easy user management and event collection can now allow an owner to administrate their property at fingertips.



Technical specifications

- Material : Zinc Alloy/Boron Alloy Shackle
- Operating Temperature : -10 °C to +60 °C
- Operating Humidity : From 45 to 75%
- Battery Capacity : Lithium Rechargeable 500mAh
- Dimension & weight : 2.5 x 2.5 x 1.2 inches in 480g
- IP rating : IP65
- Wireless Technology : Bluetooth Low Energy 5.0 compatible
- Wireless Coverage : 30 feet (Line of Sight)
- Display : LED Color Code (Blue, Green, Neon Orange)
- Power Port : Micro-USB connector (Type B)
- Companion App : Android 6.0 or later, iOS 10.0 or later
- Log Storage : up to 256 event records
- Key Storage : up to 100 keys
- Lock Access : Mobile APP and Smart Key (Programmable)

Smart High Precious Padlock

BGPL1334WP

Brilliant Guard BGPL1334WP is developed for indoor/outdoor warehouses, goods container freight and utility building. It is fully compliance with Industrial IP standard up to IP66. Lower part of lock body is protected by heavy-duty plastic to improve accessibility and increase robustness. Sharing lock to group of friends or colleague can be just few-clicks away. Companion mobile app can be found from Android or iOS app



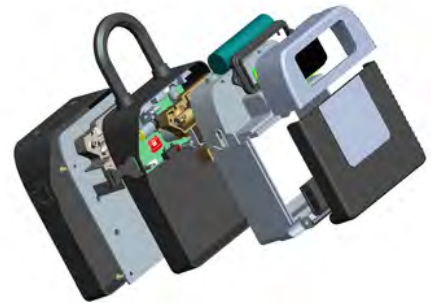
Technical specifications

- Material : Zinc Alloy/Boron Alloy Shackle
- Operating Temperature : -10°C to +60°C
- Operating Humidity : From 45 to 75%
- Battery Capacity : Lithium Rechargeable 500mAh
- Dimension & weight : 2.5 x 2.5 x 1.2 inches in 480g
- IP rating : IP65
- Wireless Technology : Bluetooth Low Energy 5.0 compatible
- Wireless Coverage : 30 feet (Line of Sight)
- Display : LED Color Code (Blue, Green, Neon Orange)
- Power Port : Micro-USB connector (Type B)
- Companion App : Android 6.0 or later, iOS 10.0 or later
- Log Storage : up to 256 event records
- Key Storage : up to 100 keys
- Lock Access : Mobile APP and Smart Key (Programmable)

Keyless Lockbox

BGKL1288

Brilliant Guard KL1288 is exclusively developing for enterprise and small business owners to share access key and valuable compact goods outdoor or indoor. With spacious interior designated for keys and cards, the removable shackle, touch screen keypad, and industrial standard rated security design. Comes with our patented master-key access function.



Technical specifications

- Material : Zinc Alloy/Boron Alloy Shackle
- Operating Temperature : -10°C to +60°C
- Operating Humidity : From 45 to 75%
- Battery Capacity : Lithium Rechargeable 2000mAh
- Dimension & weight : 4.1 x 5.2 x 2.3 inches in 1200g
- IP rating : IP65
- Wireless Technology : Bluetooth Low Energy 5.0 compatible
- Wireless Coverage : 30 feet (Line of Sight)
- Display : LED Color Code (Blue, Green, Neon Orange)
- Power Port : Micro-USB connector (Type B)
- Companion App : Android 6.0 or later, iOS 10.0 or later
- Log Storage : up to 1000 event records
- Key Storage : up to 100 keys
- Lock Access : Pin Code, Mobile App and Smart Key (Programmable)

Mini Keyless Lockbox

BGKL1289

Brilliant Guard KL1289 is our compact version of keyless lockbox that exclusively designed to good fit for Airbnb and real estate market designed to latch directly over door knob or handle, making it ideal for those with frequent houseguests or rental tenants.

Constructed of rust-resistant steel, this lock can be used for both indoor and outdoor use, also the storage is large enough to hold up to five standard-size keys, and setting combination is easy to be set through BG connect mobile app, which can identified all PIN users in access logs.

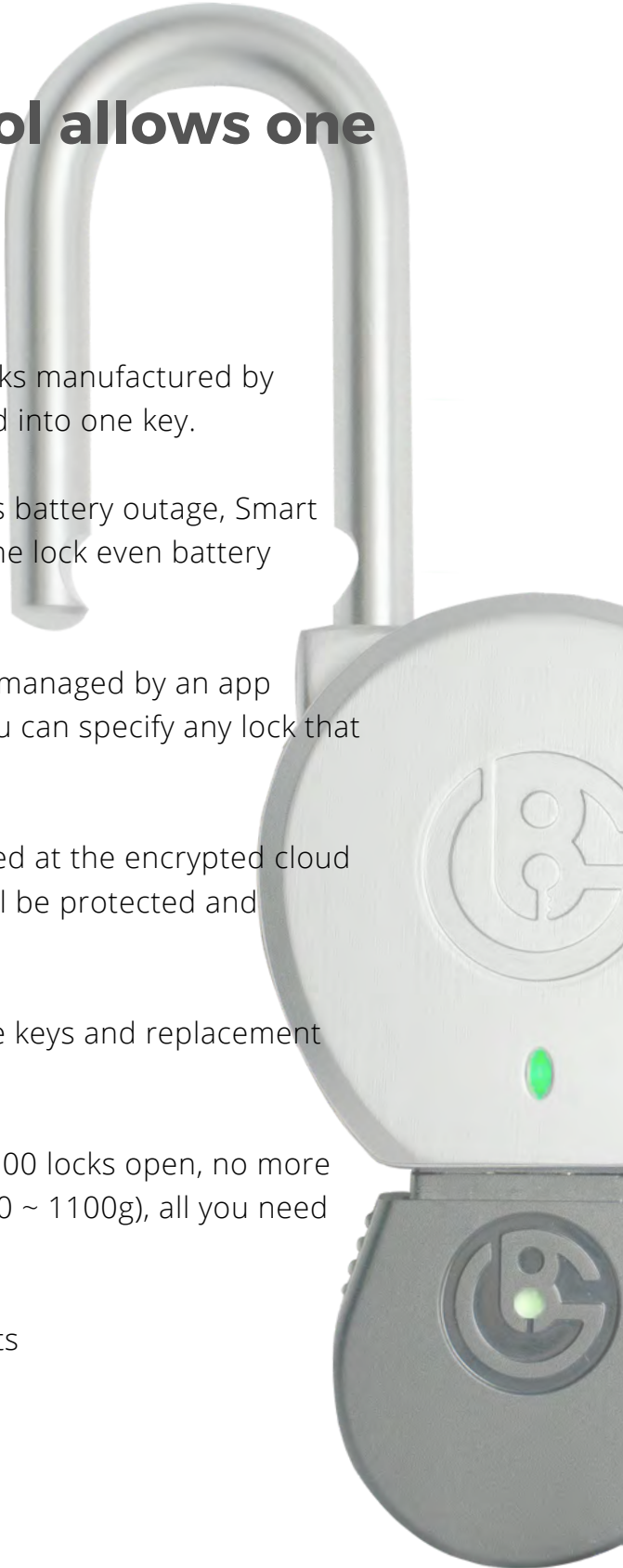


Technical specifications

- Material : Zinc Alloy/Boron Alloy Shackle
- Operating Temperature : -10°C to +60°C
- Operating Humidity : From 45 to 75%
- Battery Capacity : Lithium Rechargeable 2000mAh
- Dimension & weight : 2.0 x 3.75 x 3.25 inches in 600g
- IP rating : IP65
- Wireless Technology : Bluetooth Low Energy 5.0 compatible
- Wireless Coverage : 30 feet (Line of Sight)
- Display : LED Color Code (Blue, Green, Neon Orange)
- Power Port : Micro-USB connector (Type B)
- Companion App : Android 6.0 or later, iOS 10.0 or later
- Log Storage : up to 1000 event records
- Key Storage : up to 100 keys
- Lock Access : Pin Code, Mobile App and Smart Key (Programmable)

Smart Key

With Smart Key, Perfect access control allows one key for all locks.

- 
- 01. The smart key is capable of opening locks manufactured by Brilliant Guard*, all the access is integrated into one key.
 - 02. The critical issue of the electricity lock is battery outage, Smart Key acts as an electricity booster to open the lock even battery drains.
 - 03. The smart key can easily be set up and managed by an app (Android and iOS). With just a few clicks, you can specify any lock that you want to add.
 - 04. The user data are transmitted and stored at the encrypted cloud server. If you lost your phone, your data will be protected and retrieved from our secured cloud server.
 - 05. Environmental Friendly - No more spare keys and replacement locks. It's eco-friendly and cost-effective.
 - 06. Each rechargeable key supports up to 100 locks open, no more carrying heavy metal keys (ex Avg. 11g x 100 ~ 1100g), all you need now is one smart key (~ 35g).

*Smart key works for all BG locking products

Smart Key - All you need is one key

BGMK6338






Brilliant Guard MK6338 is designed to provide an alternative way to access your private locking system and manage remote properties. With a portable lightweight but built with durable material and a compact design. Smart-key built with state-of-art wireless hardware and industrial approved secured digital key algorithm. Our companion smartphone App can be used to manage and collect all selectively connected locking system activities. Whether you are a small business owner or factory manager, a smart key is a simple way to start your lock management.



Technical specifications

- | | |
|-------------------------|---|
| • Material | : Plastics Body & Zinc Alloy Cover |
| • Operating Temperature | : -10°C to +60°C |
| • Operating Humidity | : From 45 to 75% |
| • Battery Capacity | : Lithium Rechargeable 250mAh |
| • Dimension & weight | : 1.8 x 2.6 x 0.5 in 34g |
| • Wireless Technology | : Bluetooth Low Energy 5.0 compatible |
| • Wireless Coverage | : 30 feet (Line of Sight) |
| • Display | : LED Color Code (Blue, Green, Neon Orange) |
| • Power Port | : Micro-USB connector (Type B) |
| • Companion App | : Android 6.0 or later, iOS 10.0 or later |
| • Log Storage | : up to 256 event records |
| • Key Storage | : up to 100 locks |
| • Key Access | : Any Brilliant Guard lock |

Locks Product Comparisons

					
	Pad Lock	Pad Lock	Lock Box	Lock Box	Pad Lock
Model	BGPL1333SP	BGPL1338	BGKL1288	BGKL1289	BGPL1330
Materia	Zinc Alloy Boron Alloy Shackle	Zinc Alloy Boron Alloy Shackle	Zinc Alloy Boron Alloy Shackle	Zinc Alloy Boron Alloy Shackle	Zinc Alloy Boron Alloy Shackle
Dimensions	2.5x2.5x1.2	2.5x2.5x1.2	4.1x5.2x2.3	2.0x3.8x.3.	3.5x2.5x1.5
Weight	480g	480g	1200g	600g	N/A
Battery	500mAh	500mAh	2000mAh	2000mAh	500mAh
IP rating	IP66	IP66	IP66	IP66	IP66
Lock access	Mobile APP Smart Key	Mobile APP Smart Key	Mobile APP Smart Key PIN Code	Mobile APP Smart Key PIN Code	Mobile APP Smart Key Key
Wireless	BLE 5.0	BLE 5.0	BLE 5.0	BLE 5.0	BLE 5.0
Temp	-10 to 60°C	-10 to 60°C	-10 to 60°C	-10 to 60°C	-10 to 60°C

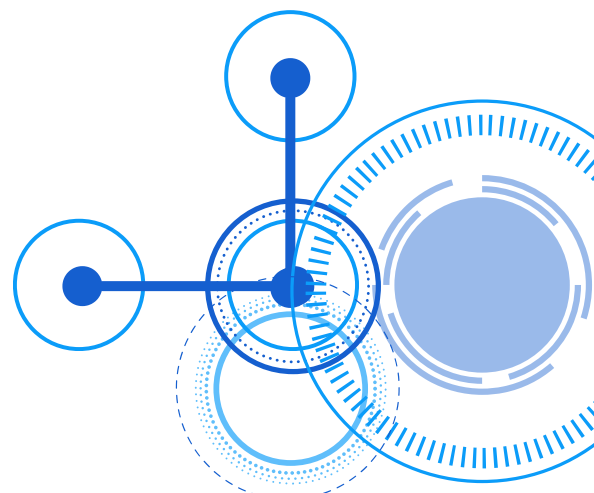
*The product specifications may vary, and all features, functionality and other specifications are subject to change without notice or obligation

Sensors & Gateway



With the continued influx of connected devices, organizations are looking for ways to gain better visibility of connected devices, control their access to the network, and apply security to IoT devices that lack embedded security features. Ongoing monitoring of IoT devices is needed so that abnormal behavior can be detected and remediated quickly and efficiently.

Secure and Monitor Connected Devices with BG Connect Hub



BLE-WIFI Gateway

BGWL1289

Brilliant Guard WL1289 is a Bluetooth Low Energy (BLE) to Wi-Fi connectivity gateway. This robust, Wi-Fi enabled with TLS security standard gateway bridging with our BG private server via MQTTS protocol can seamlessly deliver user and device management data from BG locks anytime, anywhere. This gateway provides hassle-free real-time monitoring in our workspace solution in a private network.



Technical specifications

- Material : Plastic ABS
- Color : White
- Weight : 138g
- Size : Lithium Rechargeable 2000mAh
- Scanning Range : 4.7 x 4.7 x 0.9 inches
- Protocol : MQTT (TCP/SSL)
- Charging : POE / DC Power / Micro USB

BLE-Temperature Sensor

BGNS1112

Provides a simple solution for monitoring temperature and relative humidity

APPLICATION:

- Cold room
- Refrigerator
- Medical laboratory
- Server equipment



NB-IOT Water Leakage Sensor

BGSEN20310-0000

Provides a simple and efficient solution for monitoring flooding

APPLICATION:

- Water pipes room
- Data center subfloors
- HVAC equipment
- Smart toilet



Air Quality Monitor Sensor

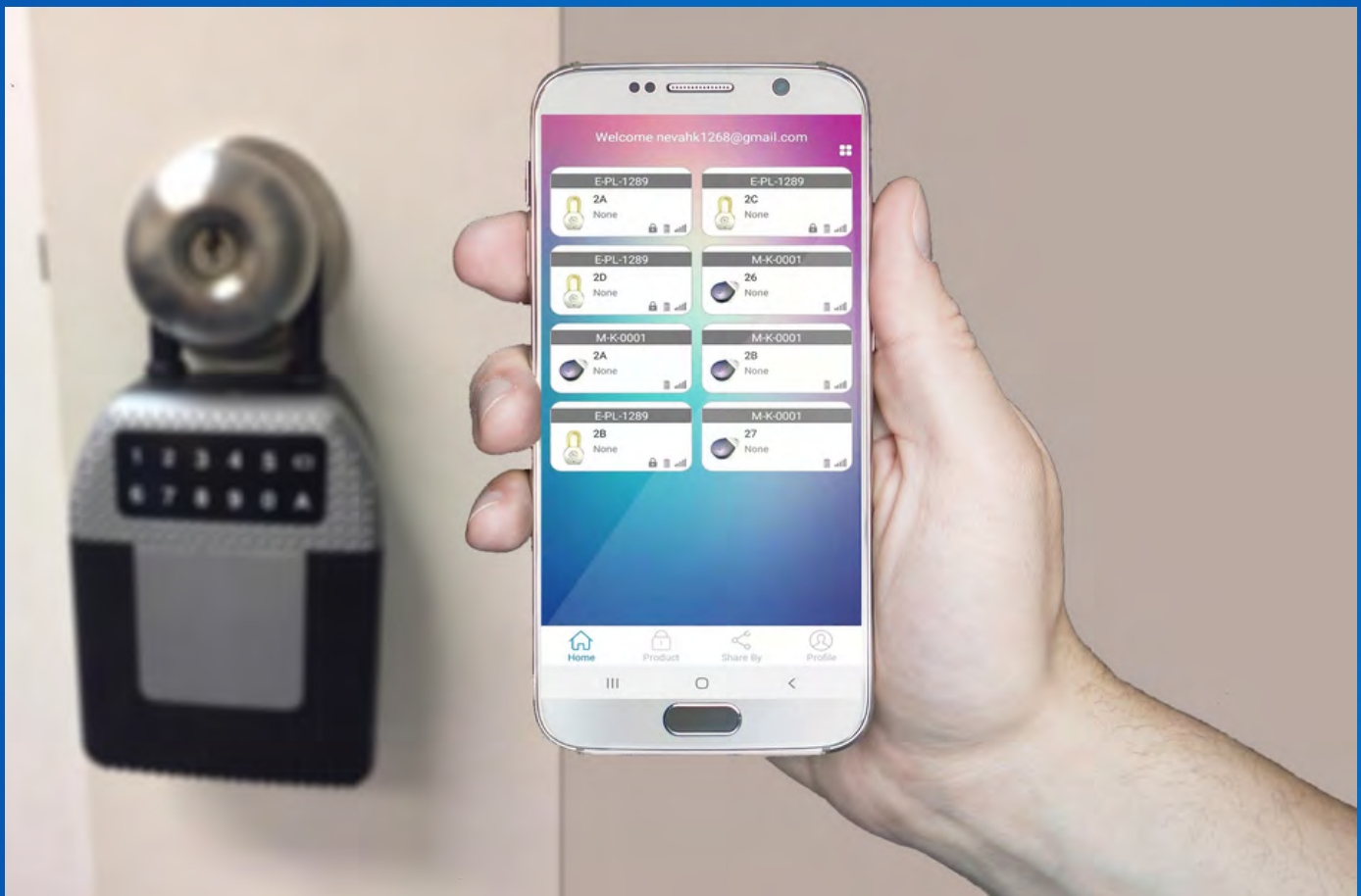
BGSEN10701

General Environment air quality Sensor provides a simple and cost-effective

APPLICATION: Air Quality Monitoring

- Office
- Shop
- Mall
- School

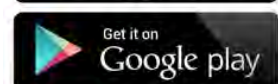




Mobile Application

Brilliant Guard mobile client extends the current one key solution, giving you secure and easy remote access on the go.

- Easy to take into use in just a minute
 - Built with Google / Apple login provides fast account access.
 - Initial lock serialization can be done by scanning a QR code.
 - Bluetooth connections are all encrypted.
 - Access right management on both locks and master keys.
 - The application is available for iPhone and Android devices.
- Android version 8 or greater
 - Apple iOS version 11 or greater
 - Data encryption: TLS / AES128
 - Location / Contact / BLE access required.
 - Bluetooth operation with lock and key recommended within 5 meter.
 - Internet access on mobile is required.



Quality Build





- HK Address : Unit 1307, 15-59 Au Pui Wan Street, Fo Tan, Shatin, Hong Kong
- HK Phone : (852) 2690 4219
- US Address : 3520 S. Morgan St. Unit 232 Chicago, IL, 60609, United States
- US Phone : (630) 229 4601
- Mail : info@brilliantguard.com
- Web : www.brilliantguard.com



BRILLIANT GUARD